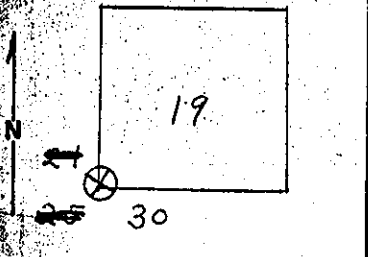


Index File No. 4S R. 9W CORNER RECORD (SEARCH) Tract or Survey No. R-1
 Merid: WILL. R.D. HEBO County TILLA. #702
 N.F. SIUSLAW State ORE.

CORNER DIAGRAM



DESCRIBE CORNER MONUMENT ~~FOUND~~ GLO SET. POST & MKD.
 30" SNA9, N. 60° E., 159 LKS.
 36" SNA9, N. 26° W., 178 LKS.
 40" SNA9, S. 10° W., 86 LKS.
 36" SNA9, S. 62° E., 133 LKS. 2

DESCRIBE BEARING TREES OR OTHER OFFICIAL ACCESSORIES FOUND
~~I CAN FIND NO EVIDENCE OF THE ORIG. CORNER.~~
 M. WHITMORE, USFS, 2-26-52 FOUND THE ORIGINAL
 N.W. BT WITH VISIBLE SCRIBE MKS. "BT"
 HE THEN RE-WITNESSED THE CORNER.
 26" FIR, N. 79° W., 23 FT. MKD. T4SR10WS24BT.
 34" FIR, N. 77° E., 65 FT. MKD. T4SR9WS19BT. 3

PHOTO IDENTIFICATION DATA

Photo No. EJ-10-37
 Filed At. _____
 Object Ident. _____
 Ident. By _____
 Signature _____ 7

DESCRIBE CORNER LOCATION RELATIVE TO NEAR-BY FEATURES, ALSO HOW TO REACH CORNER
 18" FIR, S. 59° W., 47 FT. MKD. T4SR10WS25BT.
 30" SPRUCE, S. 38° E., 42 FT. MKD. T4SR9WS30BT.
 FOUND ALL RE-WITNESSES AS RECORDED BY WHITMORE.
 FOUND 4X4X60 LIMB POST 48" ABOVE GROUND ALONGSIDE
 A 3/4 GALV. PIPE.
 I PUT BT SIGNS & PAINTED RED BAND AROUND BT'S 4

PLANE COORDINATE POSITION DATA

State _____ Zone _____
 X _____
 Y _____
 Estab. By _____
 Agency _____ 8

Signature Leonard Whitmore Title Forestry tech Division Timber Headquarters Hebo Date 5-2-69 7100-52
 REV. 65 5

no additional information

LEONARD WHITMORE IS A DEPUTY COUNTY SURVEYOR
 QUALIFIED TO RE-WITNESS AUTHENTIC ORIGINAL
 MONUMENTS. *John Carter* COUNTY SURVEYOR 3/27/86